

MOUNT ALLISON UNIVERSITY

CLASSICS 3511-Z

## LAB METHODS IN CLASSICAL ARCHAEOLOGY

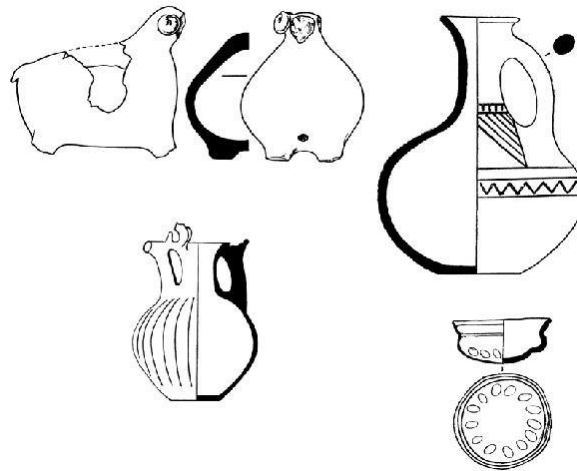
### ARCHAEOLOGICAL EXCAVATION AT THE TEMPLE OF VENUS AT POMPEII

INSTRUCTOR: ILARIA BATTILORO

EMAIL: [ibattiloro@mta.ca](mailto:ibattiloro@mta.ca)

COURSE LOCATION: POMPEII, ITALY

Dates: **May 21-June 22, 2018**



*Archaeological drawing of ancient pottery*

### COURSE DESCRIPTION

The analysis and interpretation of archaeological finds (especially pottery) are at the core of archaeological investigation of ancient sites, as they allow archaeologists to achieve varied goals: establish a time scale, document interconnections between different areas, and suggest what type of activities were carried out at particular sites.

This course provides students with first-hand experience and practice on processing, analyzing, and interpreting archaeological artifacts. On the practical side, students will gain skills associated with ceramic examination, including drawing, analyzing, and describing pottery by using standard terminology, working with ceramics databases, and understanding typology and seriation. On the theoretical side, we will address the main research questions in which pottery's analysis and interpretation can play a crucial role, as well as the various ways in which ceramic data can be interpreted.

## COURSE REQUIREMENTS

Student performance will be measured in terms of: lab participation and write-up (60%), discussions (20%), and the final paper (20%).

## REQUIRED TEXTS

Rice, P.M. 2005. *Pottery Analysis: A Sourcebook*. University of Chicago Press, Chicago.

Sinopoli, C. M. 1991. *Approaches to Archaeological Ceramics*. Plenum Press, New York.

Orton, C., P. Tyers, and V. Vince. 1993. *Pottery in Archaeology*. Cambridge University Press, Cambridge. [also known as *PLA*].

**A packet of readings on Pompeian ceramics will be provided on the site.**

## IMPORTANT DATES

Registration date: April 30<sup>th</sup> (The Registrar's office will register the students who signed to participate to this course)

Dropping date: May 11<sup>th</sup>, 2018

## COURSE POLICIES

*Make-up Exams, extensions* – Missed exams will be counted “0”. No make-up exams or quizzes are given without compelling reason and without documented proof. A written paper may not be substituted for a missed exam. Exams not picked up in class on the day that they are handed back can be picked up during the professor's office hours.

*Plagiarism, cheating, academic misconduct* – All written works must to be composed by the individual under whose name they are submitted. For papers, students are reminded to cite all ideas that are not their own – these include traditional sources such as articles and books, as well as information or data acquired from electronic databases. The suggested format for footnotes, endnotes, and bibliographies is included at the end of paper assignment. Academic misconduct is unacceptable and will result in a failing grade for the assignment or exam in question. Become familiar with the rules of academic misconduct by visiting the following webpage: <http://www.mta.ca/calendar/10.html>

*Assistance with disabilities* – Students requiring assistance with disabilities and exam accommodations should visit <http://www.mta.ca/disability/index.html>