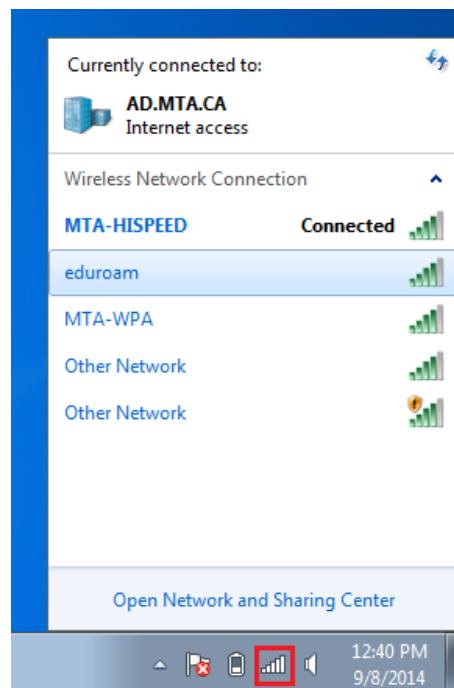


Configure Wireless for Windows 7

This document is meant to help you to connect your laptop to MTA's Wireless networks. When visiting another participating institution, you can connect your laptop to Eduroam.

Method 1: Simple configuration to wireless for Windows 7

1. Left click on the Windows wireless utility icon.

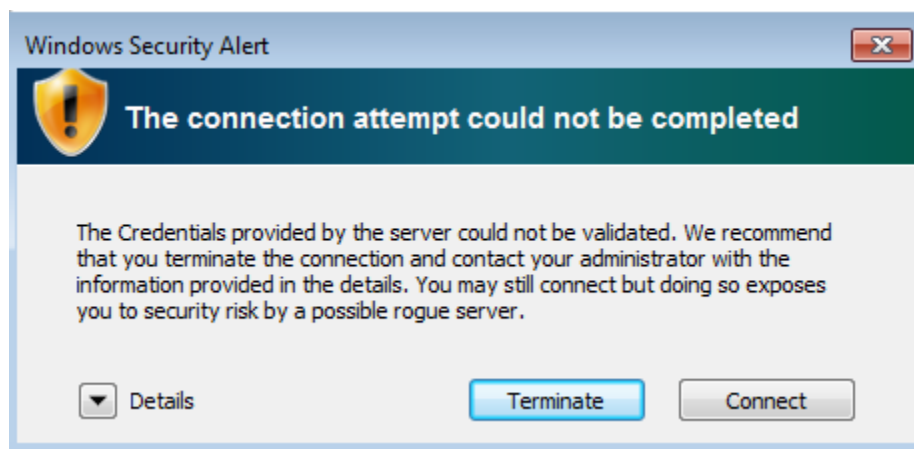


2. Select one of the following wireless networks (the network names are case sensitive):
 - **MTA-HISPEED**
 - **MTA-WPA**
 - **eduroam** (for non-MTA users visiting MTA and MTA users visiting another participating institution).

3. Click the **Connect** button.

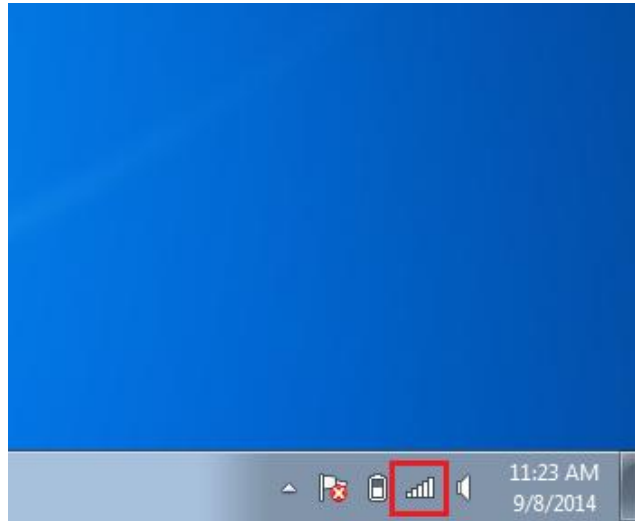


4. Enter your user name as **userid@mta.ca**, and your MTA **password**.
5. Click **OK**.
6. If you see this warning message, click **Connect**.

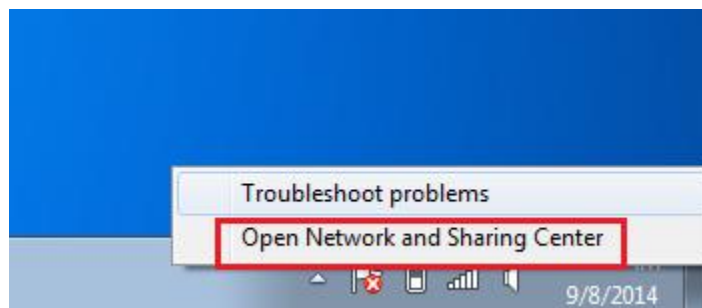


Method 2: Configure wireless manually

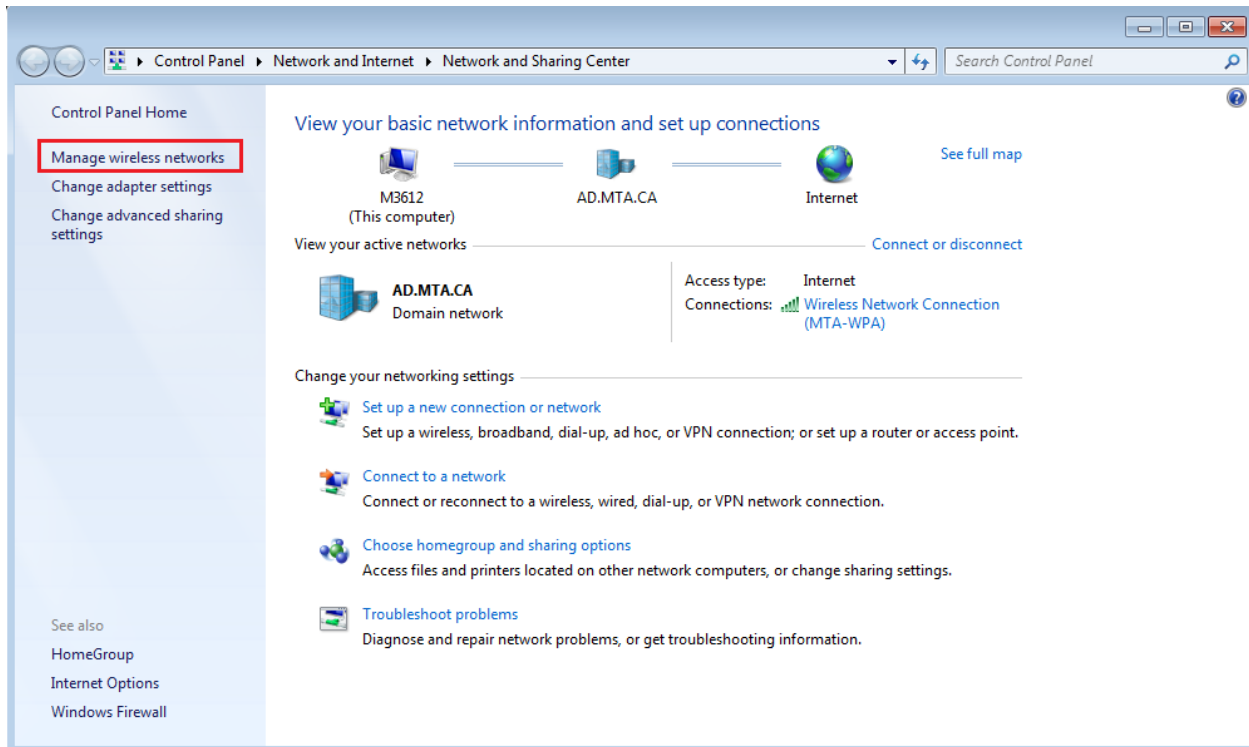
1. Right click on the Windows wireless utility icon in the system tray.



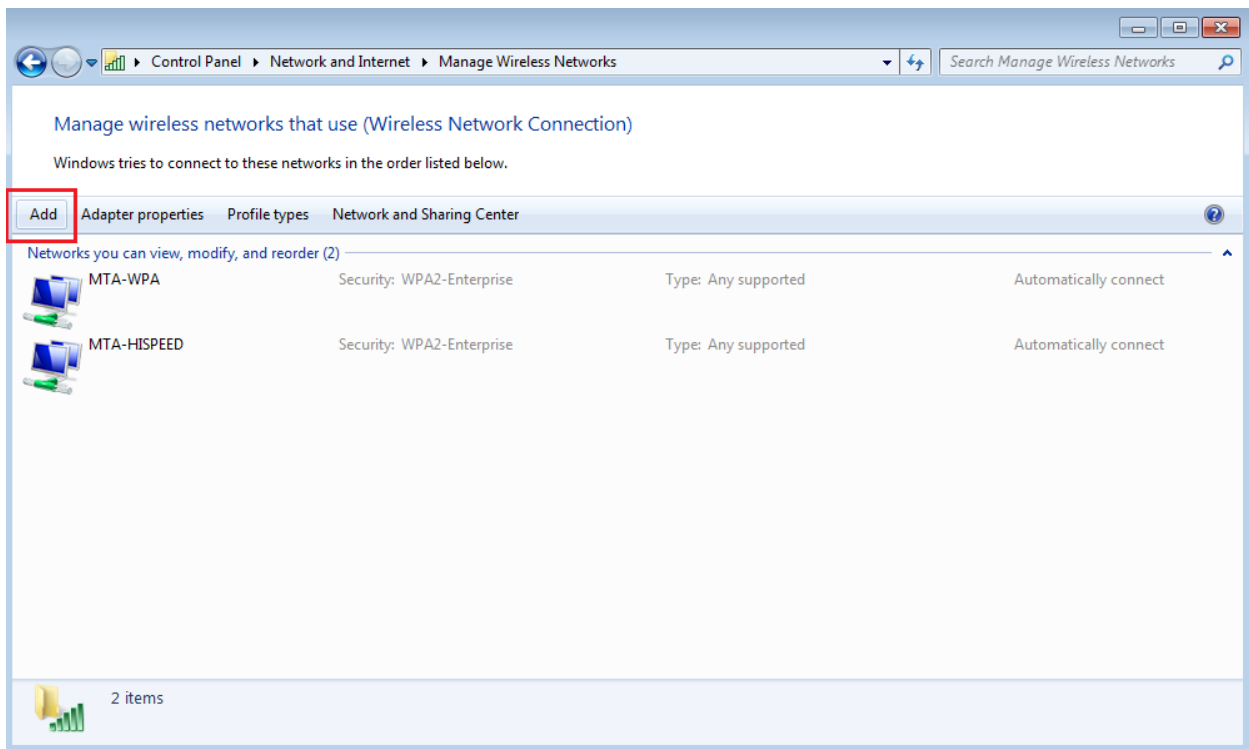
2. Open the **Network & Sharing Center**.



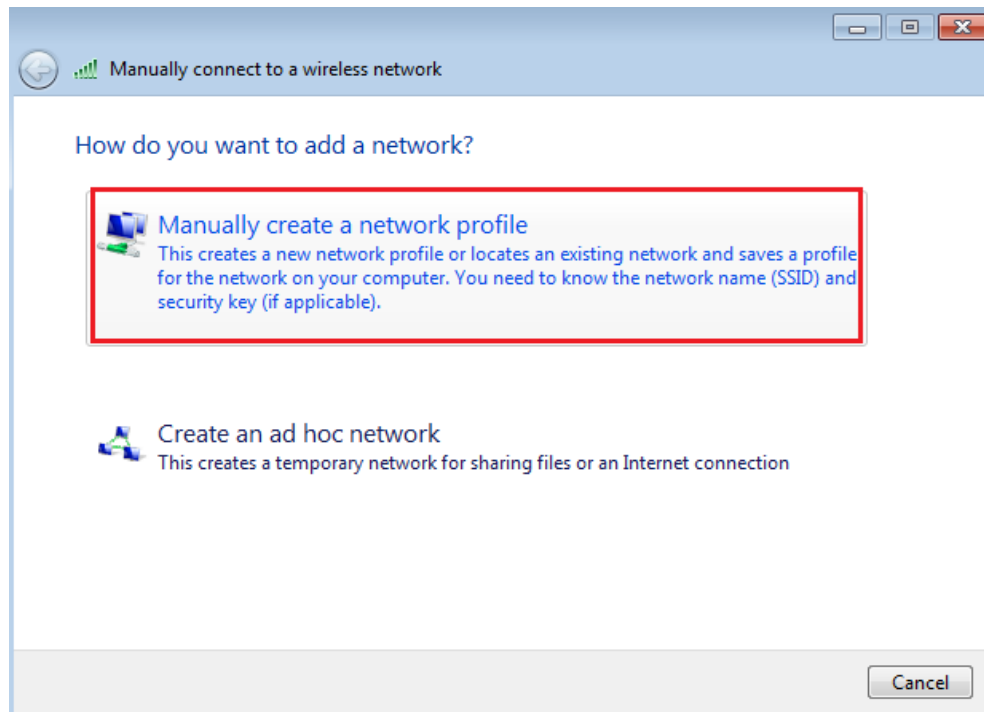
3. Select **Manage Wireless Networks**.



4. Click **Add**.



5. Select Manually Create a Network Profile.



6. Enter the following information:

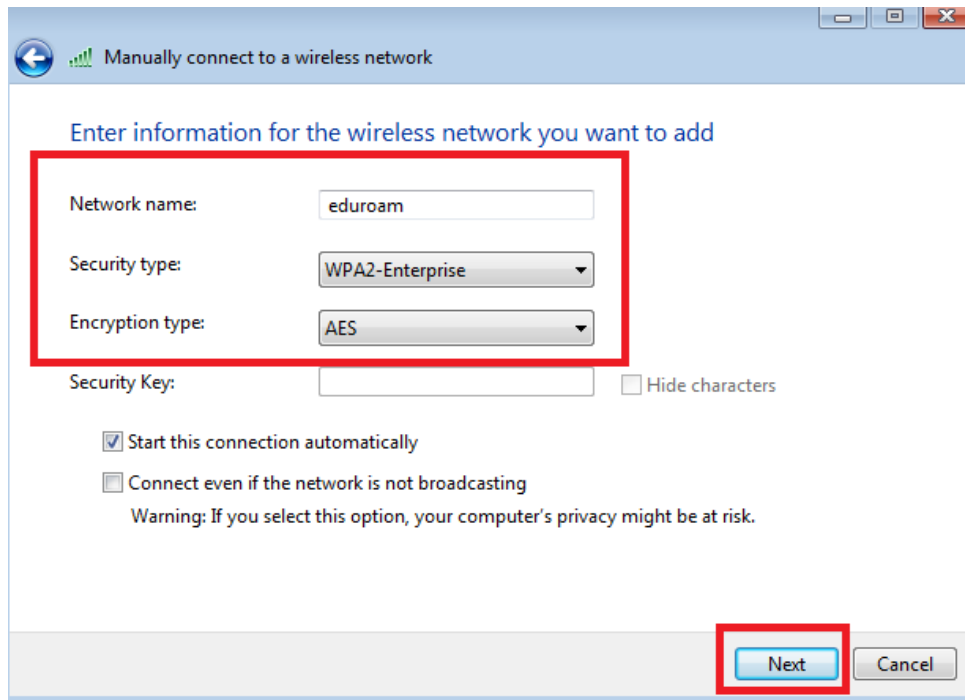
Networks (the network names are case sensitive):

- **MTA-HISPEED**
- **MTA-WPA**
- **eduroam** (for non-MTA users visiting MTA and MTA users visiting another participating institution).

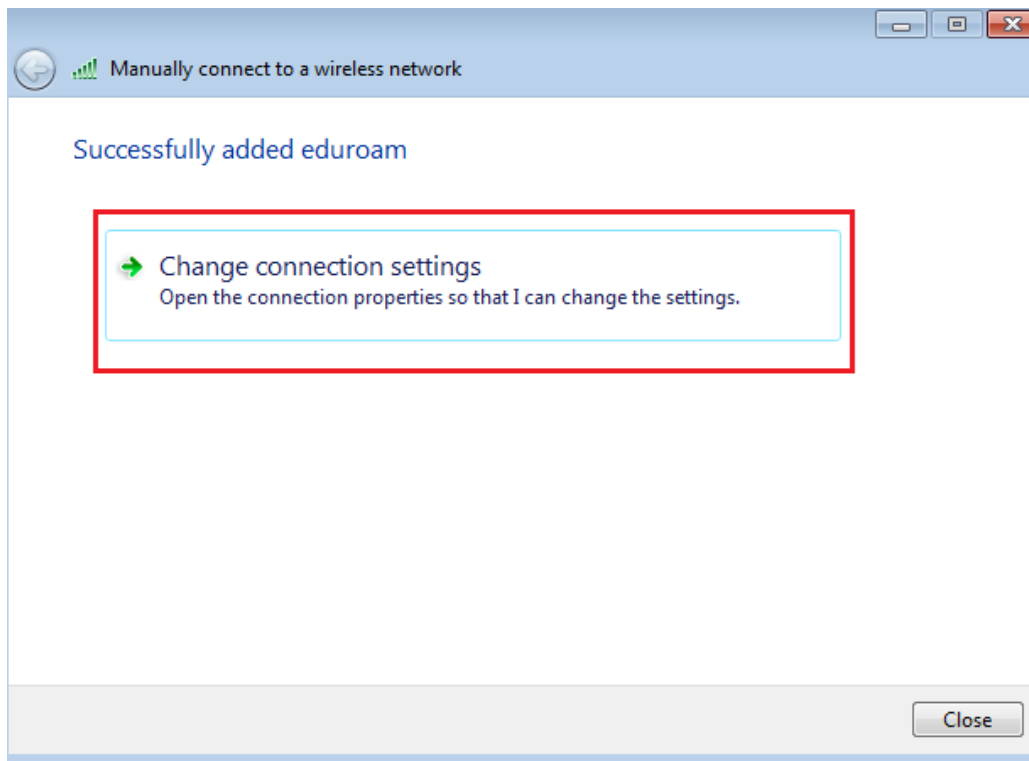
Security: **WPA2 Enterprise**

Encryption type: **AES**

7. Click Next.



8. Select **Change Connection Settings**.

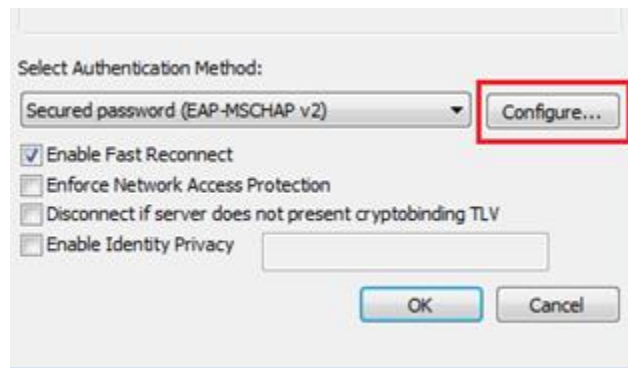


9. Select the **Security** tab in the Wireless Network Properties window and choose:
- **WPA2-Enterprise** for Security type
 - **AES** for Encryption type.

Ensure that **Microsoft Protected EAP** is selected under "Choose a network authentication method:"

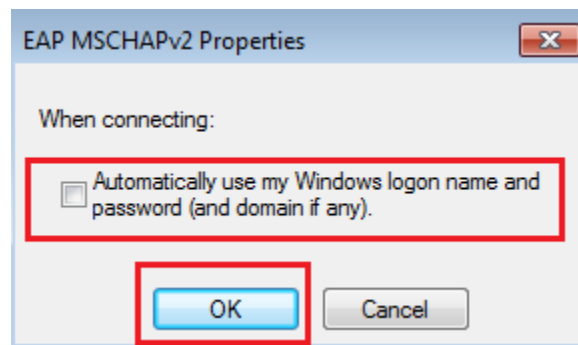
10. Click **Settings**.

11. Click the **Configure** button.

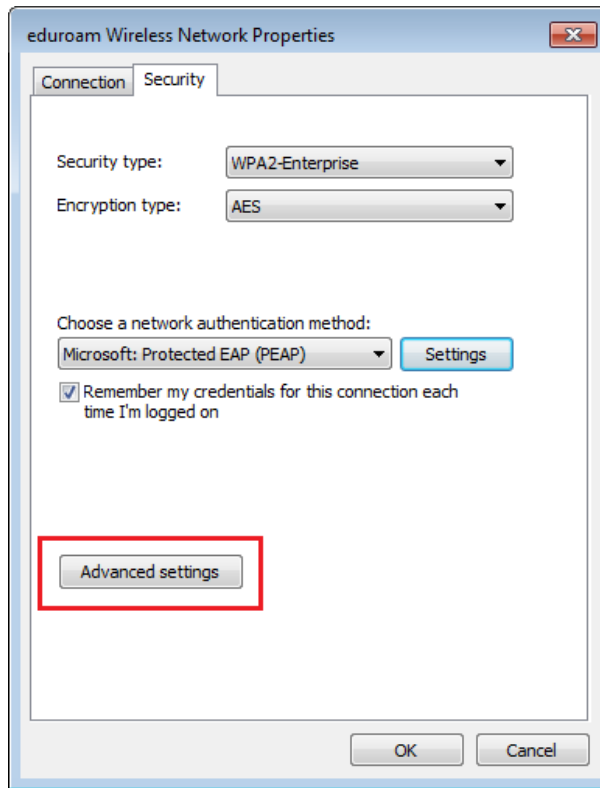


12. Uncheck "**Automatically use my Windows logon name and password**" in the EAP MSCHAPv2 Properties box.

13. Click **OK**.

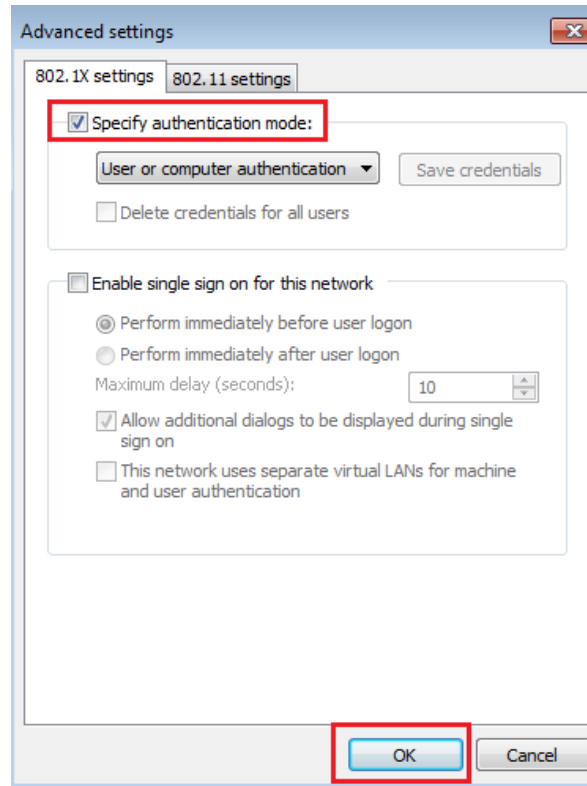


14. In the Wireless Network Properties window, select **Advanced Settings**.



15. Check the "**Specify authentication mode**" box. Ensure that User or computer authentication is selected.

16. Click **OK**.



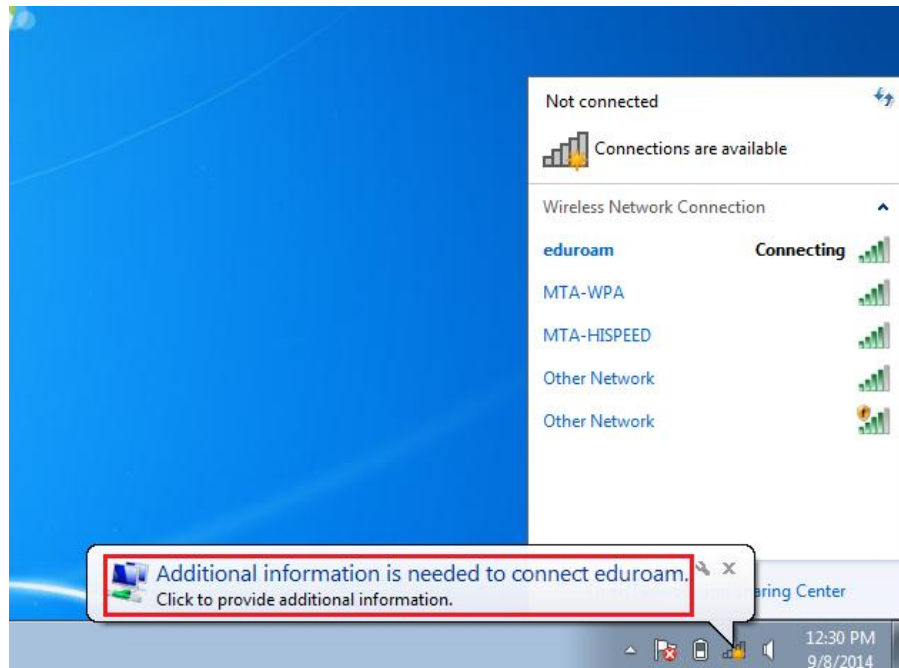
17. Click **Close**.

18. Click on the wireless utility icon in the Windows system tray.

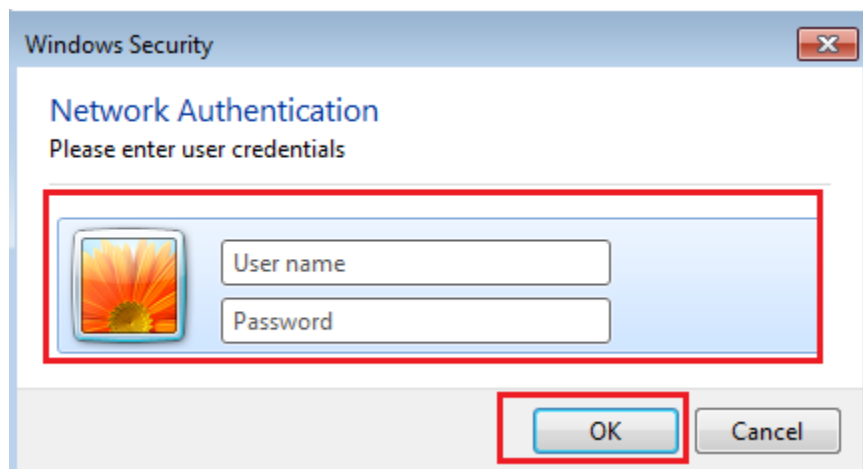
19. Choose the **MTA-HISPEED**, **MTA-WPA** or **eduroam** wireless connection you set up.



20. Click on the "Additional information is needed to connect ..." message window.



21. Enter your MTA **username** ([userid@mta.ca](mailto:user@mta.ca)) and **password** to authenticate and complete the connection.



22. Click **OK**.

Your laptop is now connected to the wireless network you have selected.